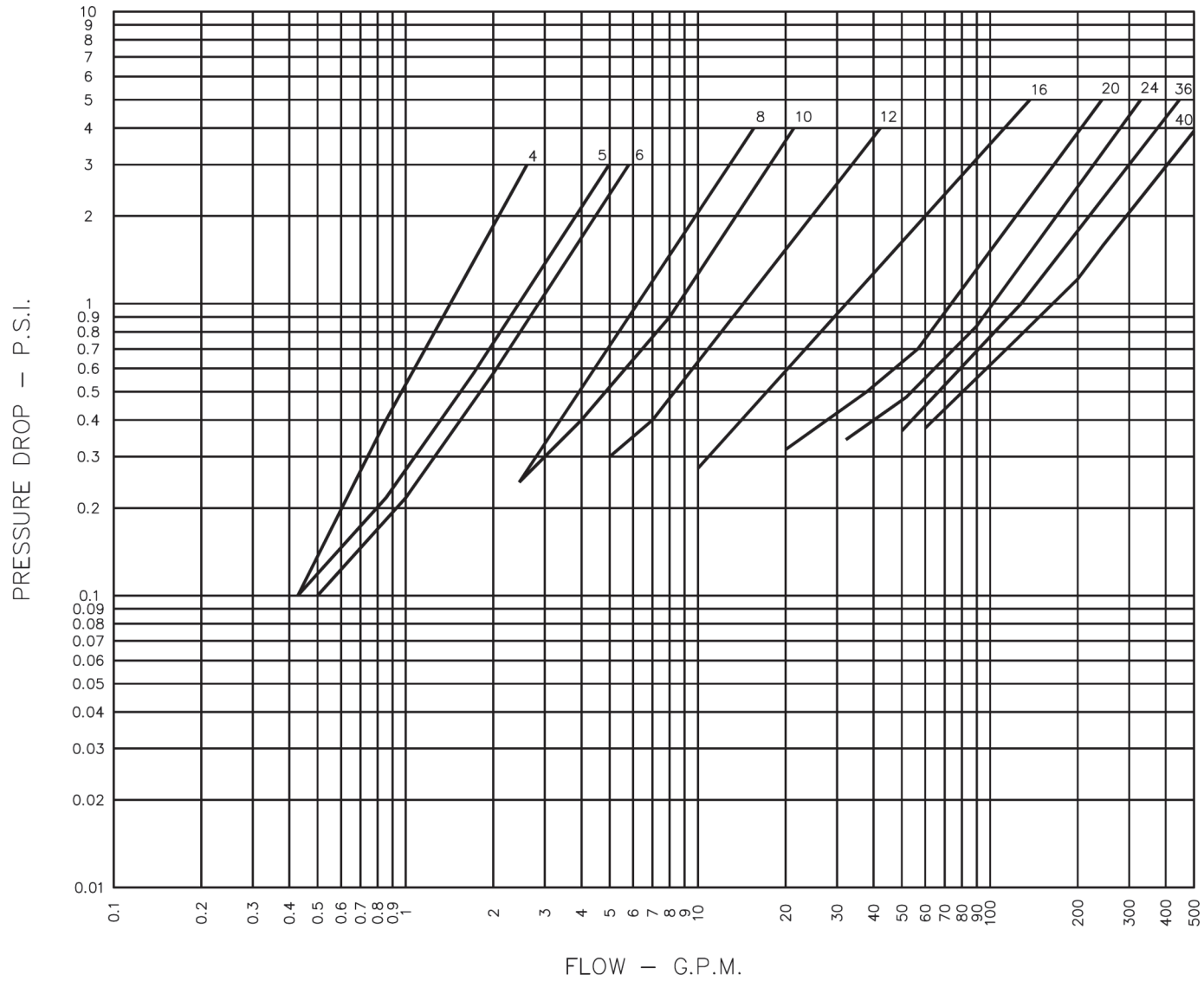


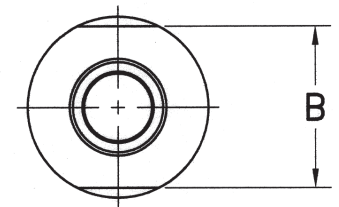
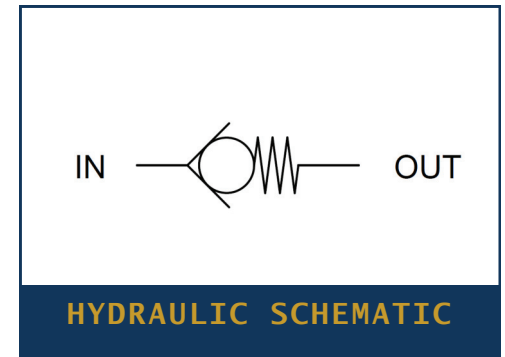
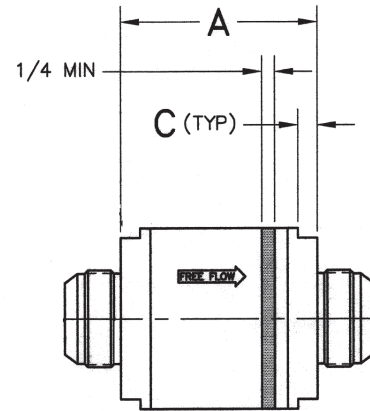
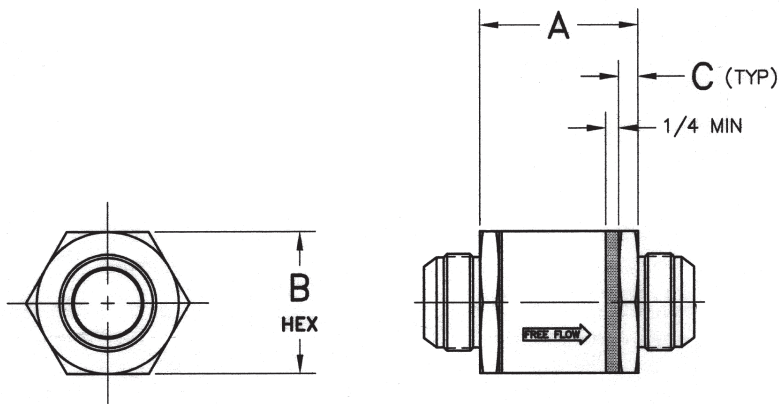


FLOW CURVE SWING CHECK VALVES (SIZES 4 TO 40)





PART NUMBER: 2S3000, FUEL CHECK VALVE, LOW PRESSURE



PERFORMANCE SPECIFICATIONS:

FLUIDS: AIRCRAFT FUELS PER MIL-G-5572, MIL-T-5624 AND AIR

MATERIAL: BODY 2024-T351 AL

ELASTOMER MIL-P-5315

TEMPERATURE RANGE: -65°F TO 160°F

OPERATING PRESSURE: SEE TABLE

PROOF PRESSURE: SEE TABLE

CRACKING PRESSURE: 4" H₂O MAX PSID

FLOW: SEE TABLE AT 20 INCHES H₂O MAX ΔP

INTERNAL LEAKAGE: .50 CC/MIN (FUEL) OR

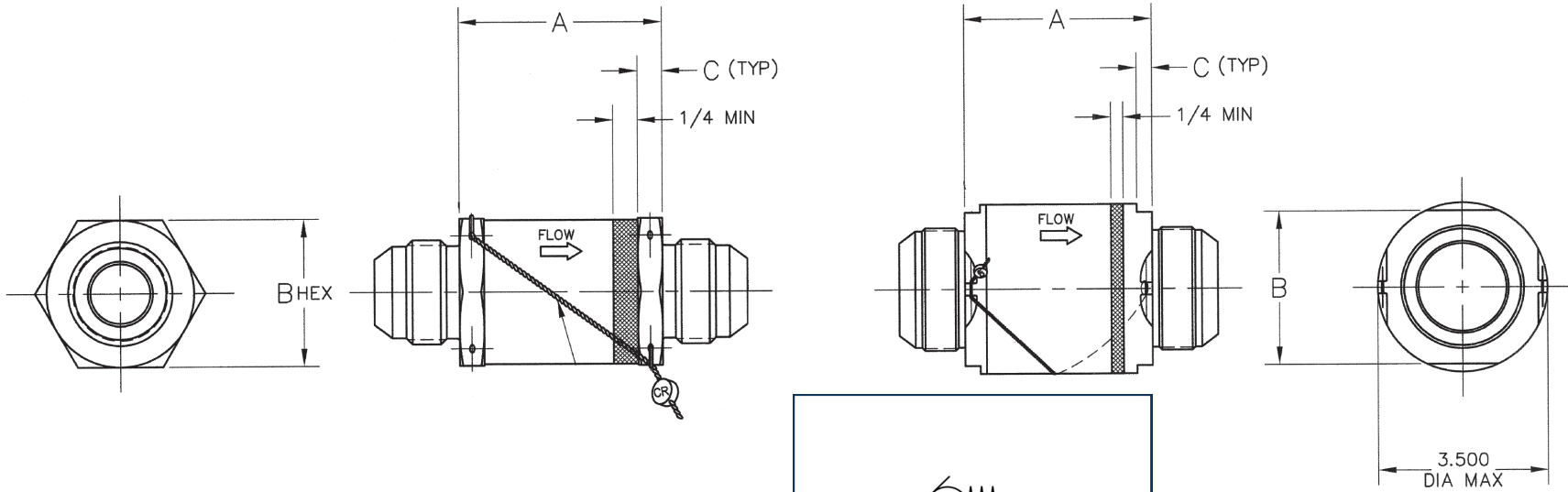
10 CC/MIN (AIR) MAX ABOVE 4" H₂O

2S3032	2.000	130	265 PSIG	400 PSIG	800 PSIG	3.813	3.125	0.312	1.940
2S3028	1.750	100				3.429	3.000	0.375	1.504
2S3024	1.500	70				3.063	2.750	0.375	1.159
2S3020	1.250	50				2.688	2.500	0.312	0.853
2S3016	1.000	30	300 PSIG	500 PSIG	1000 PSIG	2.375	1.812	0.250	0.431
2S3012	0.750	15				2.063	1.500		0.315
2S3010	0.625	10				1.782	1.187		0.192
2S3008	0.500	6				1.674			0.176
2S3006	0.375	3.75				1.563	1.063	0.127	
2S3005	0.312	2.30						0.117	
2S3004	0.250	1.25						0.113	
PART NO	TUBING O.D.	RATED FLOW (GPM)				OPERATING PRESSURE	PROOF PRESSURE	BURST PRESSURE	A ±.031

CATEGORY 1: SWING CHECK VALVES



PART NUMBER: 2S3000L, FUEL CHECK VALVE, LOW PRESSURE



PERFORMANCE SPECIFICATIONS:

FLUIDS: AIRCRAFT FUELS PER MIL-G-5572, MIL-T-5624 MIL-C-7024, TT-S-735, ASTM D-1655 JET FUELS, TYPE A, A-1, B

MATERIAL: BODY 2024-T351 AL

ELASTOMER MIL-R-83248

TEMPERATURE RANGE: -67°F TO 350°F (AMBIENT)
-67°F TO 200°F (FUEL)

CRACKING PRESSURE: 8 INCHES H₂O MAX AT 10 CC/MIN (MINIMUM)
FLOW VALVE SHALL RESEAT BEFORE OUTLET PRESS
EQUALS INLET PRESS (WITH NO PRESSURE, VALVE
MUST REMAIN CLOSED IN ANY ATTITUDE)

FLOW & ΔP: PART NO 2S3004L THROUGH 2S3008L~1.5 PSID MAX ΔP AT
RATED FUEL FLOW ALL OTHERS 1.0 PSID MAX ΔP AT RATED
FUEL FLOW (SEE TABLE)

INTERNAL LEAKAGE: (FUEL) 0.10 CC/MIN MAX FROM 4" H₂O TO OPER PRESS
(AIR) NO BUBBLES FOR 1 MINUTE FROM 4" H₂O OPER PRESS

DESIGN: IN ACCORDANCE WITH MIL-V-7899C CLASS B

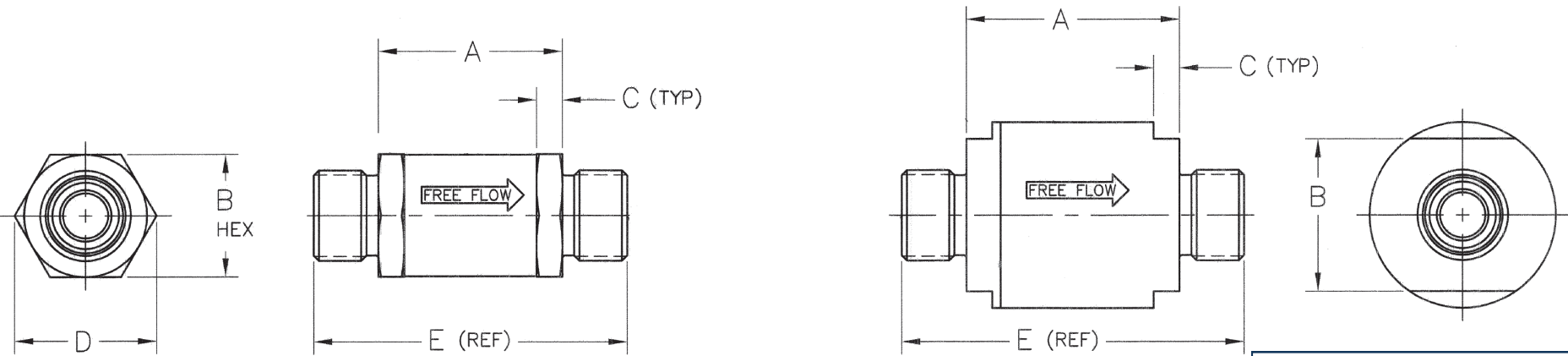
HYDRAULIC SCHEMATIC

MS28884B-32	2S3032L	2.000	130	265	400	800	3.813	3.125 ±.010	.312	1.940
MS28884B-28	2S3028L	1.750	100				3.429	3.000 ±.010	.375	1.504
MS28884B-24	2S3024L	1.500	70				3.063	2.750 +.008 -.016	.375	1.159
MS28884B-20	2S3020L	1.250	50	300	500	1000	2.688	2.500 +.008 -.016	.312	.853
MS28884B-16	2S3016L	1.000	30				2.375	1.812 +.008 -.016	.250	.431
MS28884B-12	2S3012L	.750	15				2.063	1.500 +.003 -.006		.315
MS28884B-10	2S3010L	.625	10				1.782	1.187 +.003 -.006	.125	.192
MS28884B-8	2S3008L	.500	6				1.674			.176
MS28884B-6	2S3006L	.375	3.75				1.563	1.063 +.003 -.006	.125	.127
MS28884B-5	2S3005L	.312	2.30	.117						
MS28884B-4	2S3004L	.250	1.25	.113						
MILITARY PART NO	PART NO	TUBING O.D.	RATED FLOW (GPM)	OPER PRESS (PSIG)	PROOF PRESS (PSIG)	BURST PRESS (PSIG)	A ±.031	B HEX	C MIN	WT (LBS) MAX

CATEGORY 1: SWING CHECK VALVES



PART NUMBER: 2S3600L, FUEL CHECK VALVE, LOW PRESSURE



PERFORMANCE SPECIFICATIONS:

FLUIDS: AIRCRAFT FUELS PER MIL-G-5572, MIL-T-5624 AND AIR

MATERIAL: BODY 2024-T351 AL

ELASTOMER MIL-R-25897

TEMPERATURE RANGE: -65°F TO 160°F

CRACKING PRESSURE: 4" H₂O MAX

FLOW : SEE TABLE AT 1.5 PSID MAX

INTERNAL LEAKAGE: (FUEL) .01 CC/MIN MAX FROM 4" H₂O TO OPER PRESS
(AIR) NO BUBBLES FOR 1 MINUTE FROM 4" H₂O TO OPER PRESS

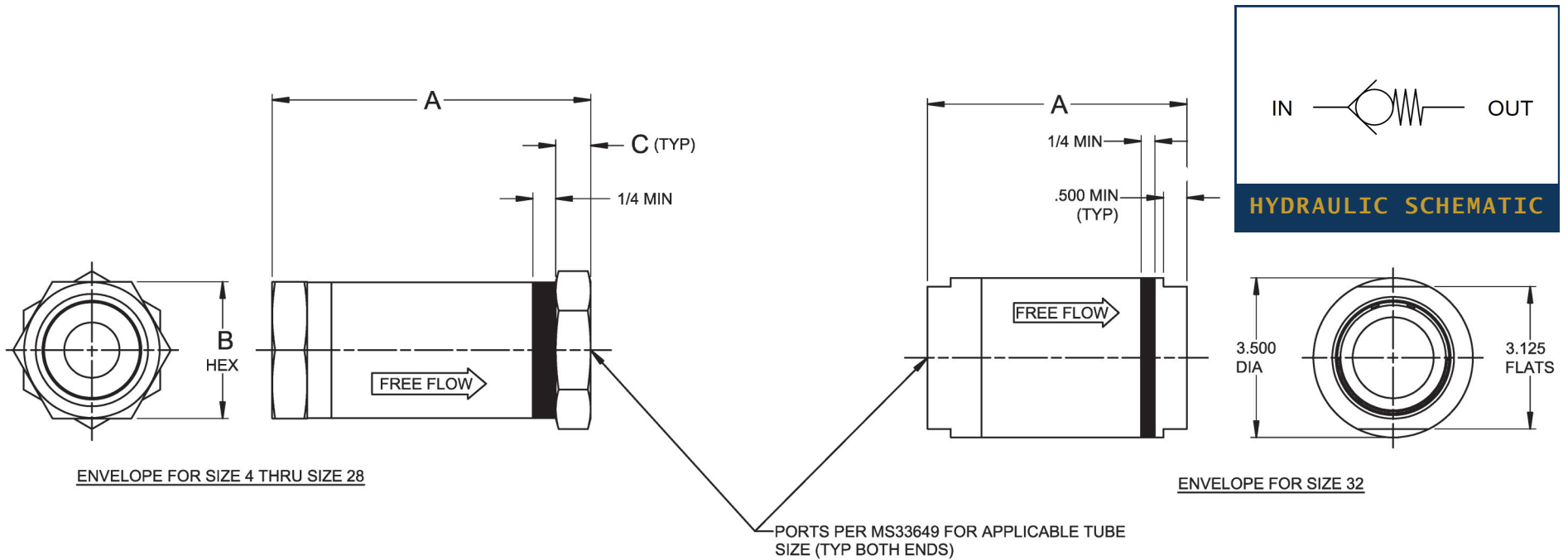
HYDRAULIC SCHEMATIC

2S3632L	2.000	130	265	400	800	3.813	3.125±.010	.312	-	5.189	1.940	
2S3624L	1.500	70				3.063	2.750	.375	3.175	4.439	1.159	
2S3620L	1.250	50				2.688	2.500	.312	2.887	4.064	.853	
2S3616L	1.000	30	300	500	1000	2.375	1.812	.250	1.371	2.092	3.751	.431
2S3612L	.750	15				2.062	1.500			1.732	3.438	.315
2S3610L	.625	10	500	750	1250	1.782	1.187	1.225	1.225	3.032	.192	
2S3608L	.500	6				1.673				2.797	.176	
2S3606L	.375	3.75				1.529	2.467			.127		
2S3605L	.313	2.30				1.545	2.451			.117		
2S3604L	.250	1.25	1.563	2.469	.113							
CRISSAIR PART NO	TUBING O.D.	FLOW (GPM)	OPER PRESS (PSIG)	PROOF PRESS (PSIG)	BURST PRESS (PSIG)	A ±.031	B HEX	C	D	E (REF)	WT (LBS) MAX	

CATEGORY 1: SWING CHECK VALVES



PART NUMBER: 2S4200, FUEL CHECK VALVE, LOW PRESSURE



PERFORMANCE SPECIFICATIONS:

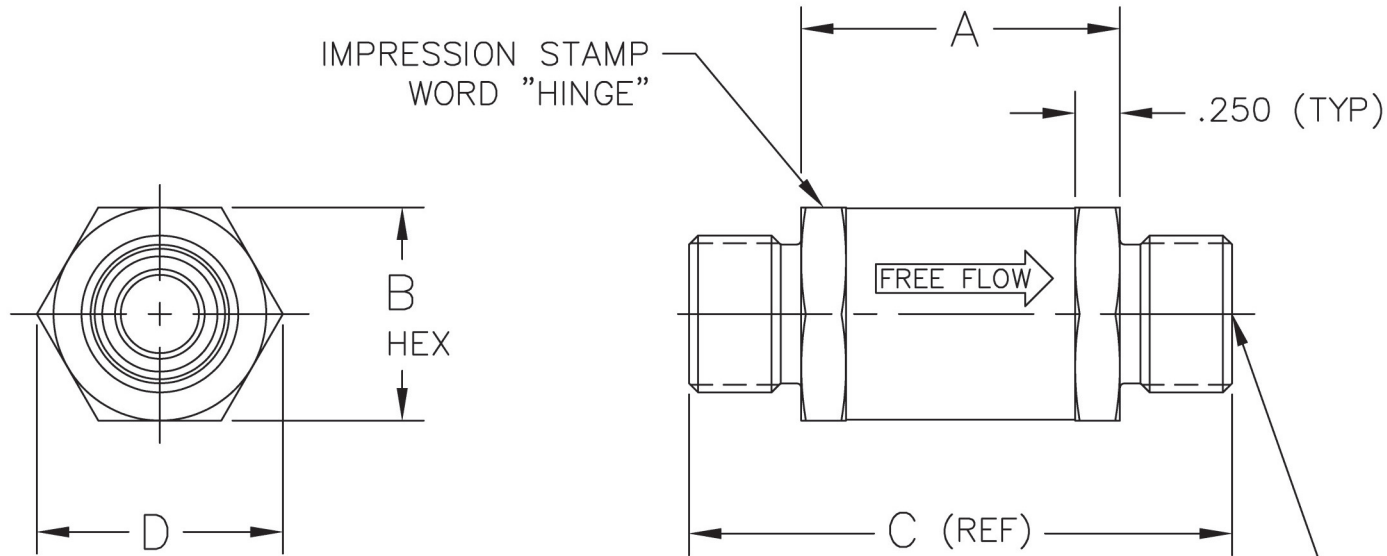
FLUIDS: AIRCRAFT FUELS PER MIL-G-5572, MIL-T-5624 AND AIR
 MATERIAL: BODY 2024-T351 AL
 ELASTOMER MIL-R-83248
 TEMPERATURE RANGE: -65°F TO 350°F
 CRACKING PRESSURE: 4" H₂O MAX
 FLOW : SEE TABLE AT: 1.5 PSID (WITH OUTLET FITTING PER MS33514)
 3.5 PSID (WITH OUTLET FITTING PER MS33656)
 INTERNAL LEAKAGE: (FUEL) .50 CC/MIN MAX ABOVE 4" H₂O
 (AIR) 10 CC/MIN MAX ABOVE 4" H₂O

2S4232	2.000	130	265	400	800	5.688	-	-
2S4228	1.750	100				5.063	3.000	.500
2S4224	1.500	70				4.625	2.750	
2S4220	1.250	50				4.062	2.500	
2S4216	1.000	30	300	500	1000	3.594	1.875	.375
2S4212	.750	15				3.500	1.500	
2S4210	.625	10				2.844	1.187	
2S4208	.500	6				2.344	1.063	.250
2S4206	.375	3.75				2.031		
2S4205	.312	2.30						
2S4204	.250	1.25						
CRISSAIR PART NO	TUBING O.D.	FLOW (GPM)				OPER PRESS (PSIG)	PROOF PRESS (PSIG)	BURST PRESS (PSIG)

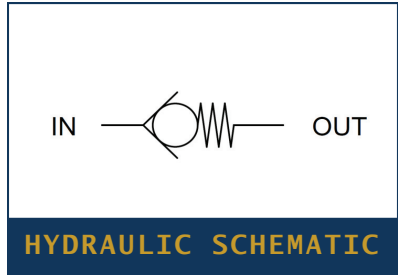
CATEGORY 1: SWING CHECK VALVES



PART NUMBER: 2S5300, FUEL CHECK VALVE, LOW PRESSURE



PORTS PER MS33514 OR AS33514, STYLE E FOR APPLICABLE TUBE SIZE, EXCEPT FOR HEX (TYP BOTH ENDS)



PERFORMANCE SPECIFICATIONS:

FLUIDS: HYDRAULIC FLUIDS PER BMS 3-11 & AIR

MATERIAL: BODY 2024-T351 AL

ELASTOMER NAS1613

TEMPERATURE RANGE: -65°F TO 160°F

CRACKING PRESSURE: 4" H₂O MAX

FLOW : SEE TABLE

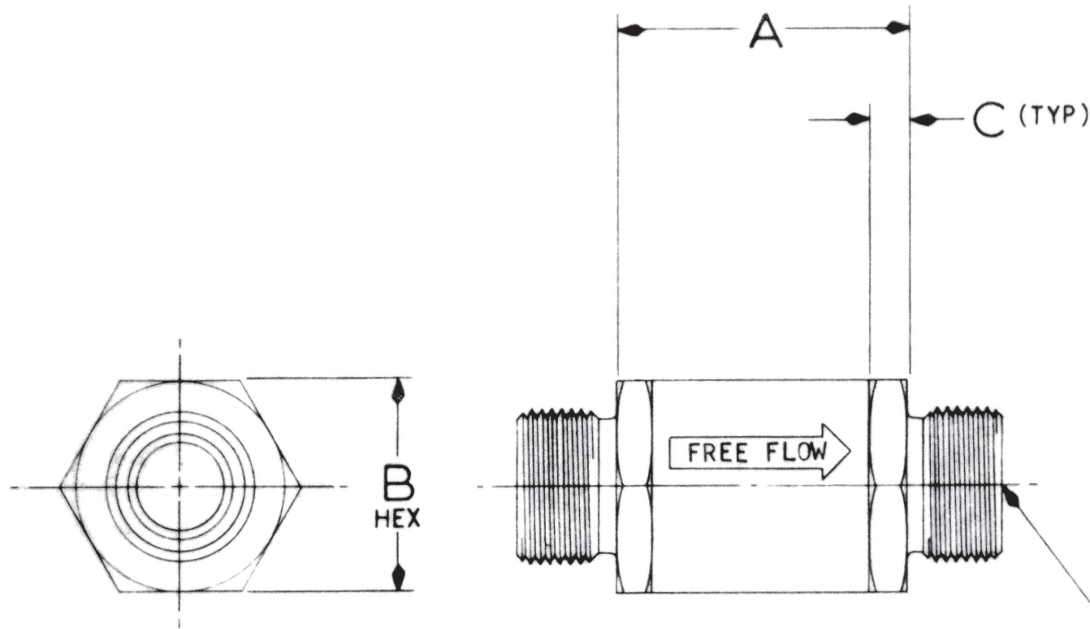
INTERNAL LEAKAGE: NO BUBBLES FOR ONE MINUTE AT 3"⁺⁰/_{.1}" H₂O AND TABULATED PROOF PRESSURE

2S5312	.750	20	4.75	300	500	1000	2.062	1.500	3.438	1.734	.315
2S5310	.625	10	5.5	500	750	1250	1.782	1.187	3.032	1.375	.192
2S5308	.500	5	.375				1.673		2.797		.176
2S5306	.375	2	.375	500	750	1250	1.529	1.063	2.467	1.219	.127
2S5305	.313	1.5					1.545		2.451		.117
2S5304	.250	0.5					1.563		2.469		.113
CRISSAIR PART NO	TUBING O.D.	FLOW (SCFM)					ΔP "H ₂ O		OPER PRESS (PSIG)		PROOF PRESS (PSIG)

CATEGORY 1: SWING CHECK VALVES



PART NUMBER: 2S5400, FUEL CHECK VALVE, LOW PRESSURE

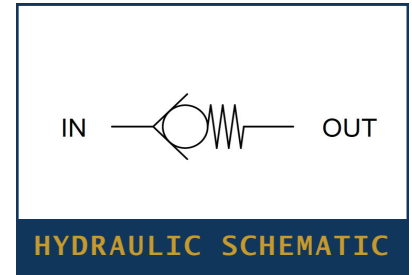


ENVELOPE FOR SIZE 4 THRU SIZE 24

PORTS PER MS33514, STYLE E FOR APPLICABLE TUBE SIZE, EXCEPT FOR HEX (TYP BOTH ENDS)

PERFORMANCE SPECIFICATIONS:

FLUIDS: HYDRAULIC OIL PER MIL-H-5606 & AIR
 MATERIAL: BODY 2024-T351 AL
 ELASTOMER MIL-P-25732
 TEMPERATURE RANGE: -65°F TO 275°F
 CRACKING PRESSURE: 4" H₂O MAX
 FLOW : SEE TABLE AT 30" H₂O MAX ΔP
 INTERNAL LEAKAGE: (OIL) .50 CC/MIN MAX ABOVE 4" H₂O
 (AIR) 10 CC/MIN MAX ABOVE 4" H₂O

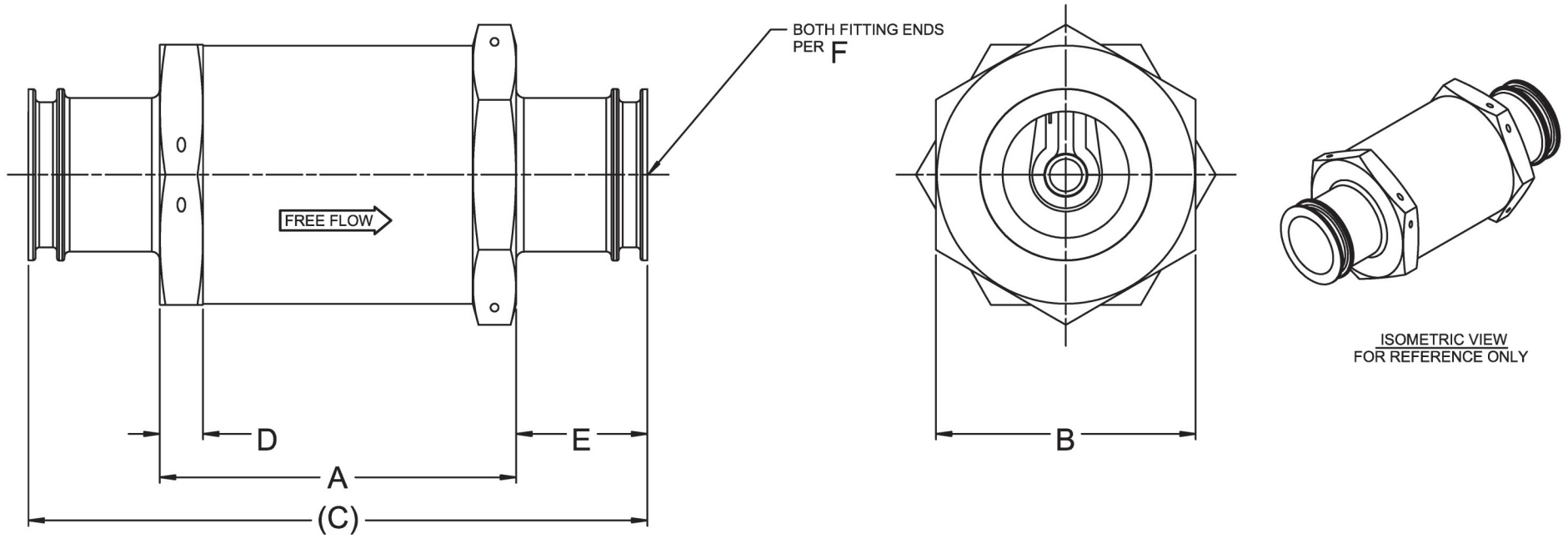


2S5406	.375	3.75	500	750	1250	1.563	1.063	.250	.127
2S5404	.250	1.25							.113
CRISSAIR PART NO	TUBING O.D.	FLOW (GPM)	OPER PRESS (PSIG)	PROOF PRESS (PSIG)	BURST PRESS (PSIG)	A ±.031	B HEX	C (REF)	WT LBS MAX

CATEGORY 1: SWING CHECK VALVES



SWING CHECK VALVE, SERIES



PERFORMANCE SPECIFICATIONS:

FLUIDS: AIR

MIL-PRF-87252C* (2S7410 ONLY)

MATERIAL: BODY 2024-T351 AL

ELASTOMER MIL-R-83248

ELASTOMER FLUOROSILICONE*

TEMPERATURE RANGE: -65°F TO 350°F AMBIENT

-65°F TO 158°F AMBIENT*

CRACKING PRESSURE: 8" H₂O MAX

FLOW : SEE TABLE AT 1 PSID MAX

INTERNAL LEAKAGE: 0.10 CC/MIN MAX FROM 8" H₂O TO 300 PSID

Ø .030 ORIFICE*

* P/N 2S7410 PERFORMANCE SPECIFICATIONS



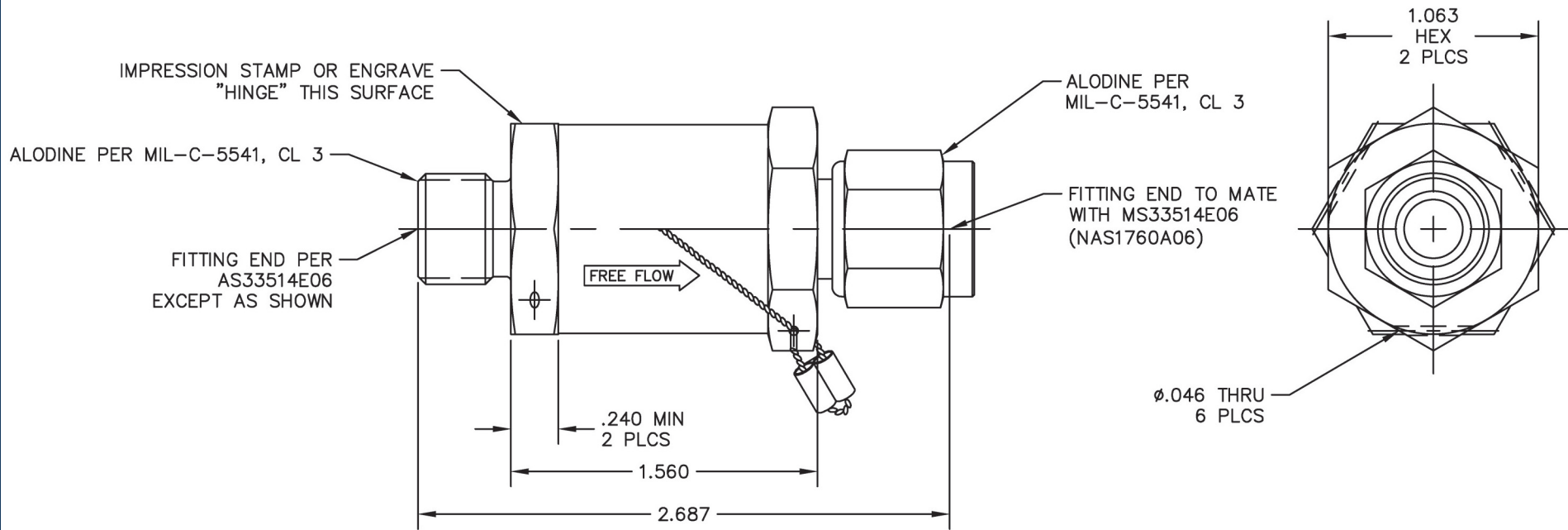
HYDRAULIC SCHEMATIC

2S7408	0.6	300	500	1000	2.058	1.500	3.574	.250	.758	AS1656-1-12	.27
2S7398	2.1				2.370	1.813	3.885			AS1656-1-16	.39
2S7400	1.2	265	400	800	2.688	2.500	4.203	.312		AS1656-1-20	.79
2S7410	60 GPM	250	375	750	3.063	2.750	4.613	.375	.775	10F18S-24	1.03
CRISSAIR PART NO	FLOW (LB/MIN)	OPER PRESS (PSIG)	PROOF PRESS (PSIG)	BURST PRESS (PSIG)	A ±.031	B HEX	C (REF)	D	E	F	WT LBS MAX

CATEGORY 1: SWING CHECK VALVES



PART NUMBER: 2S6930, SWING CHECK VALVE



PERFORMANCE SPECIFICATIONS:

FLUIDS: ALL AIRCRAFT FUELS AND AIR

MATERIAL: BODY 6061-T651 AL

ELASTOMER FLUOROSILICONE

SWIVEL NUT 7075-T73 AL

TEMPERATURE RANGE: -65°F TO 165°F

OPERATING PRESSURE: 120 PSIG

PROOF PRESSURE: 240 PSIG

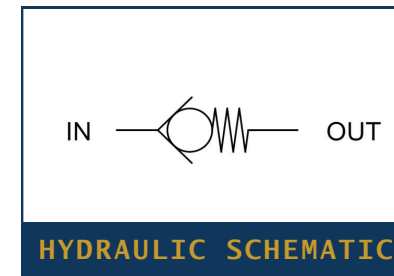
CRACKING PRESSURE: 0.8" TO 11" H₂O

FLOW: 3.25 GPM AT 1.5 PSID (USING MIL-C-7024)

INTERNAL LEAKAGE (CHECKED DIRECTION):

NONE FROM 8" H₂O TO 120 PSID

WEIGHT: .16 LBS MAX

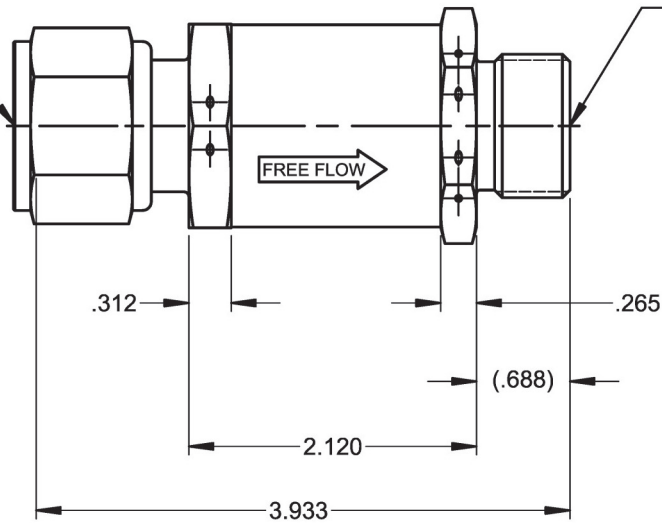


CATEGORY 1: SWING CHECK VALVES

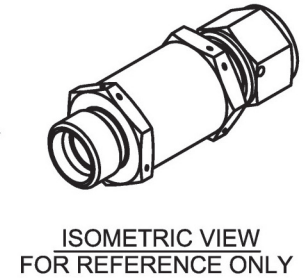
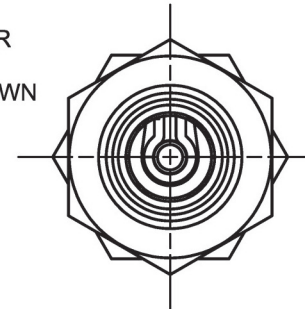


PART NUMBER: 2S7170, SWING CHECK VALVE

FITTING END TO MATE WITH MS33514E12 EXCEPT AS SHOWN (NAS1760A12)

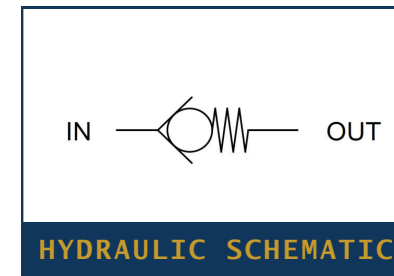


FITTING END PER MS33514E12 EXCEPT AS SHOWN



PERFORMANCE SPECIFICATIONS:

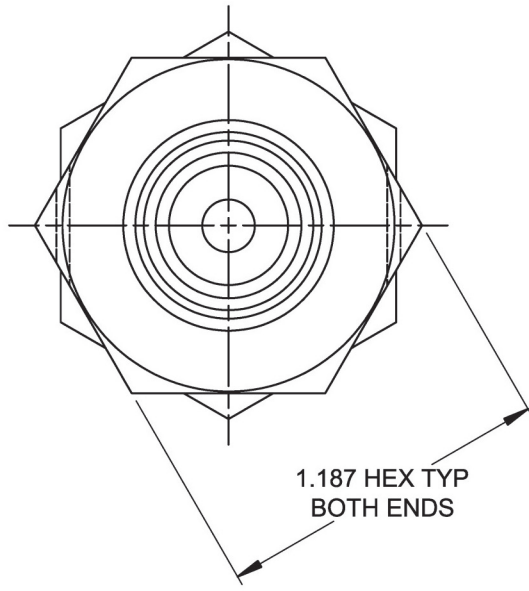
FLUIDS: ALL AIRCRAFT FUELS AND AIR
MATERIAL: BODY 2024-T351 AL
ELASTOMER MIL-R-25897
SWIVEL NUT 2024-T6 AL
TEMPERATURE RANGE: -65°F TO 160°F
OPERATING PRESSURE: 3.5 PSIG
PROOF PRESSURE: 40 PSIG
CRACKING PRESSURE: 4.5" - 10" H₂O
FLOW: 2 SCFM AT 0.7 PSID MAX
INTERNAL LEAKAGE (CHECKED DIRECTION):
NONE FROM 0 TO 20 PSID
WEIGHT: .40 LBS MAX



CATEGORY 1: SWING CHECK VALVES

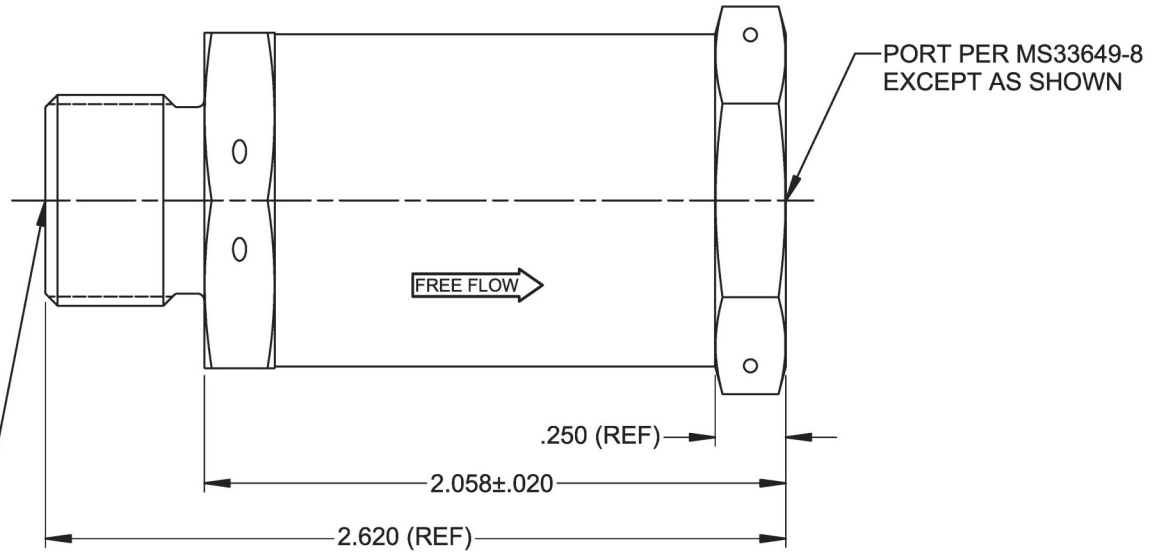


PART NUMBER: 2S2566, SWING CHECK VALVE



1.187 HEX TYP
BOTH ENDS

END PER MS33514E8
EXCEPT AS SHOWN



PORT PER MS33649-8
EXCEPT AS SHOWN

PERFORMANCE SPECIFICATIONS:

FLUIDS: ALL AIRCRAFT FUELS AND AIR

MATERIAL: BODY 2024-T351 AL

ELASTOMER MIL-P-5315

TEMPERATURE RANGE: -65°F TO 200°F

OPERATING PRESSURE: 130 PSIG

PROOF PRESSURE: 195 PSIG

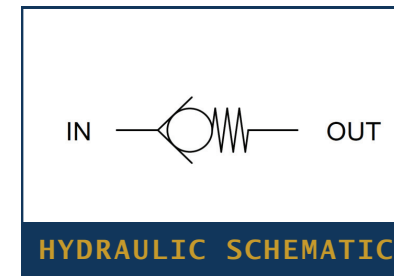
CRACKING PRESSURE: 4" H₂O MAX

FLOW: 6 GPM AT 20" H₂O MAX ΔP

INTERNAL LEAKAGE (CHECKED DIRECTION):

NONE AT 3" H₂O TO 130 PSID WITH WET SEAT

WEIGHT: .22 LBS MAX

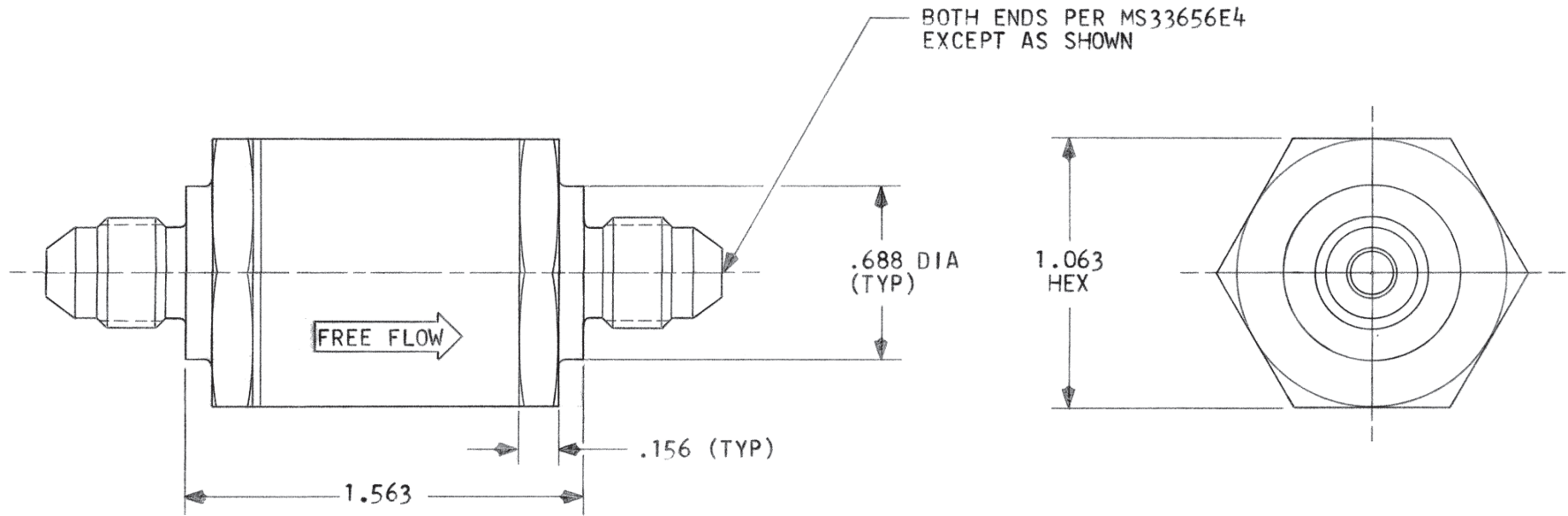


HYDRAULIC SCHEMATIC

CATEGORY 1: SWING CHECK VALVES

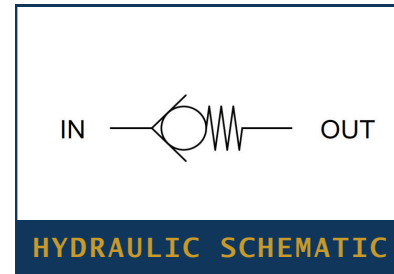


PART NUMBER: 2S2914, SWING CHECK VALVE



PERFORMANCE SPECIFICATIONS:

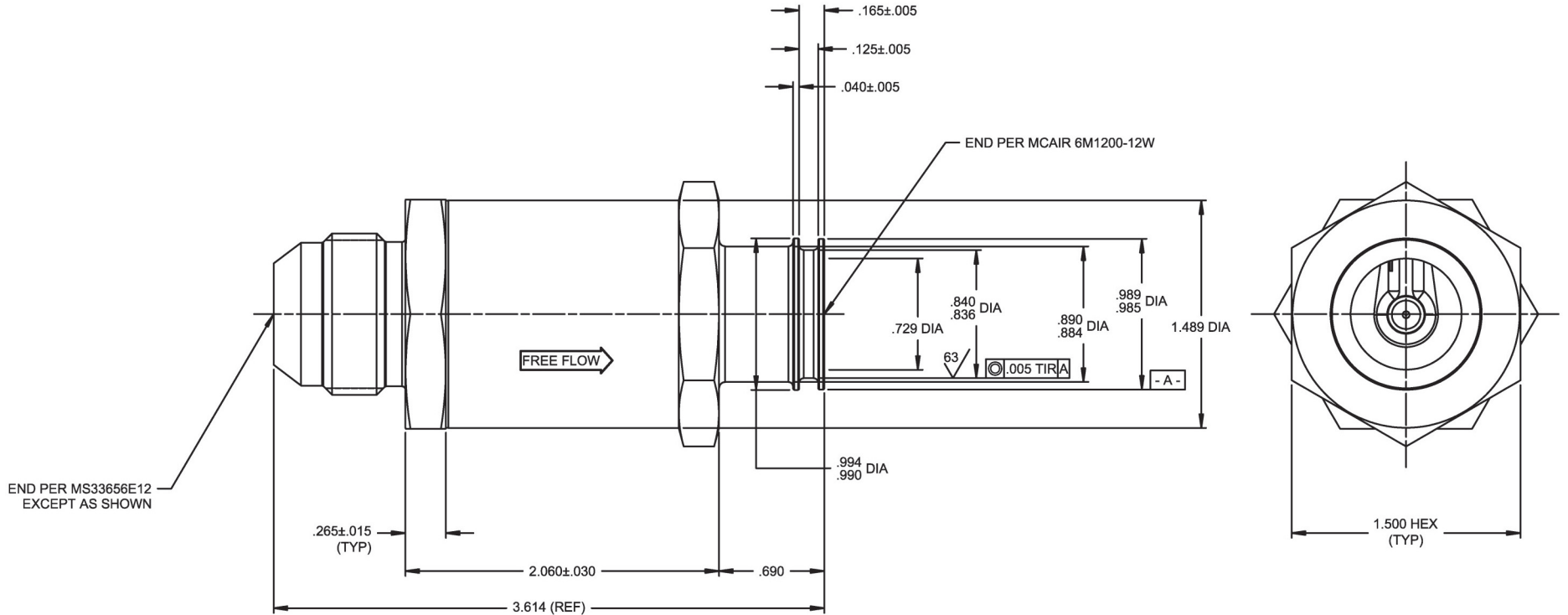
FLUIDS: ALL AIRCRAFT FUELS AND AIR
MATERIAL: BODY 303 CRES
TEMPERATURE RANGE: -65°F TO 560°F
OPERATING PRESSURE: 80 PSIG
PROOF PRESSURE: 107 PSIG
CRACKING PRESSURE: 10" H₂O MAX
FLOW: 0.2 LB/MIN AT 0.5 PSID MAX (AIR AT 38 PSIG INLET & 70°F)
INTERNAL LEAKAGE (CHECKED DIRECTION):
0.01 LB/MIN AT 20 PSID AND 70°F
WEIGHT: .30 LBS MAX



CATEGORY 1: SWING CHECK VALVES



PART NUMBER: 2S2716, SWING CHECK VALVE



PERFORMANCE SPECIFICATIONS:

FLUIDS: JP-4 & JP-5 FUELS PER MIL-T-5624

MATERIAL: BODY 2024-T851 AL

ELASTOMER SYN RUBBER

TEMPERATURE RANGE: -65°F TO 160°F

OPERATING PRESSURE: 225 PSIG

PROOF PRESSURE: 450 PSIG

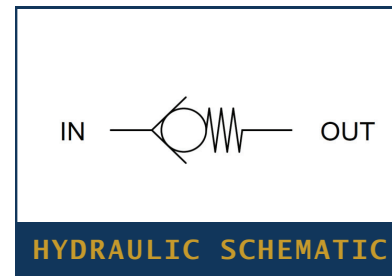
CRACKING PRESSURE: 8" H₂O MAX

FLOW: 15 GPM AT 45" H₂O MAX ΔP

INTERNAL LEAKAGE (CHECKED DIRECTION):

75±25 CC/MIN OF JP-4 AT 60 TO 150 PSID

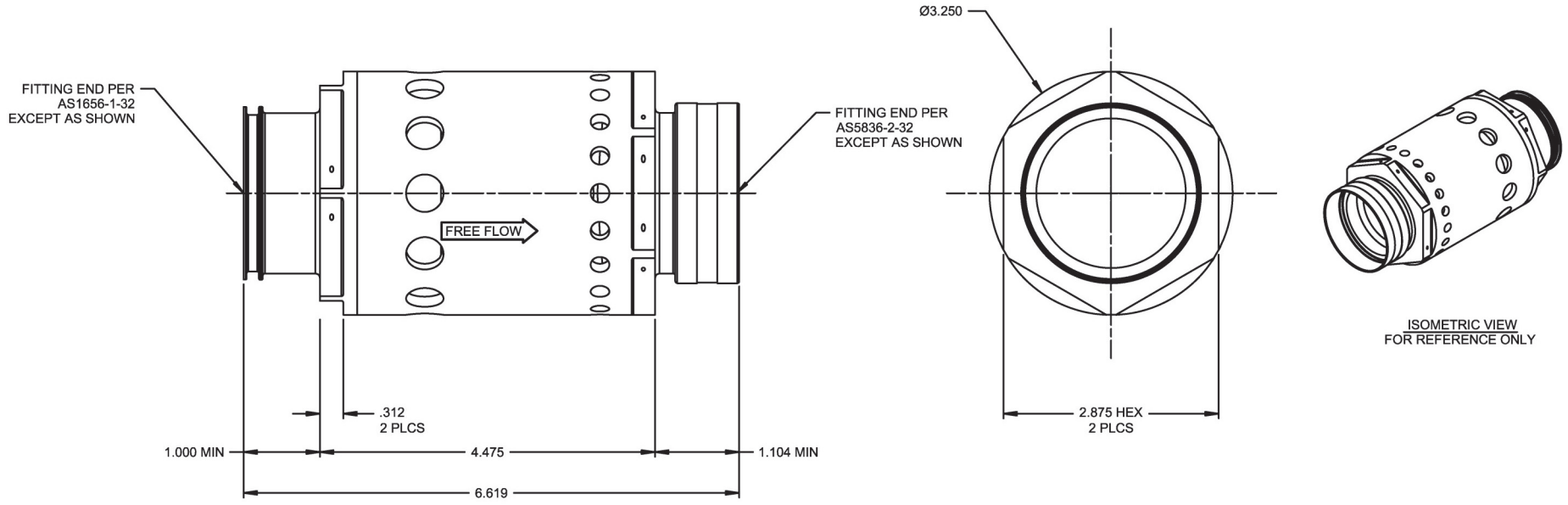
WEIGHT: .315 LBS MAX



CATEGORY 1: SWING CHECK VALVES

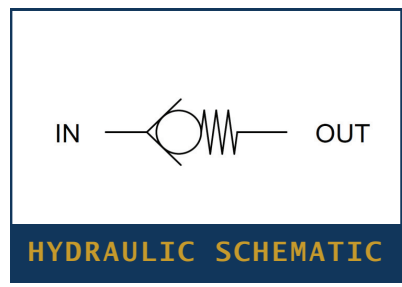


PART NUMBER: 2S7420, SWING CHECK VALVE



PERFORMANCE SPECIFICATIONS:

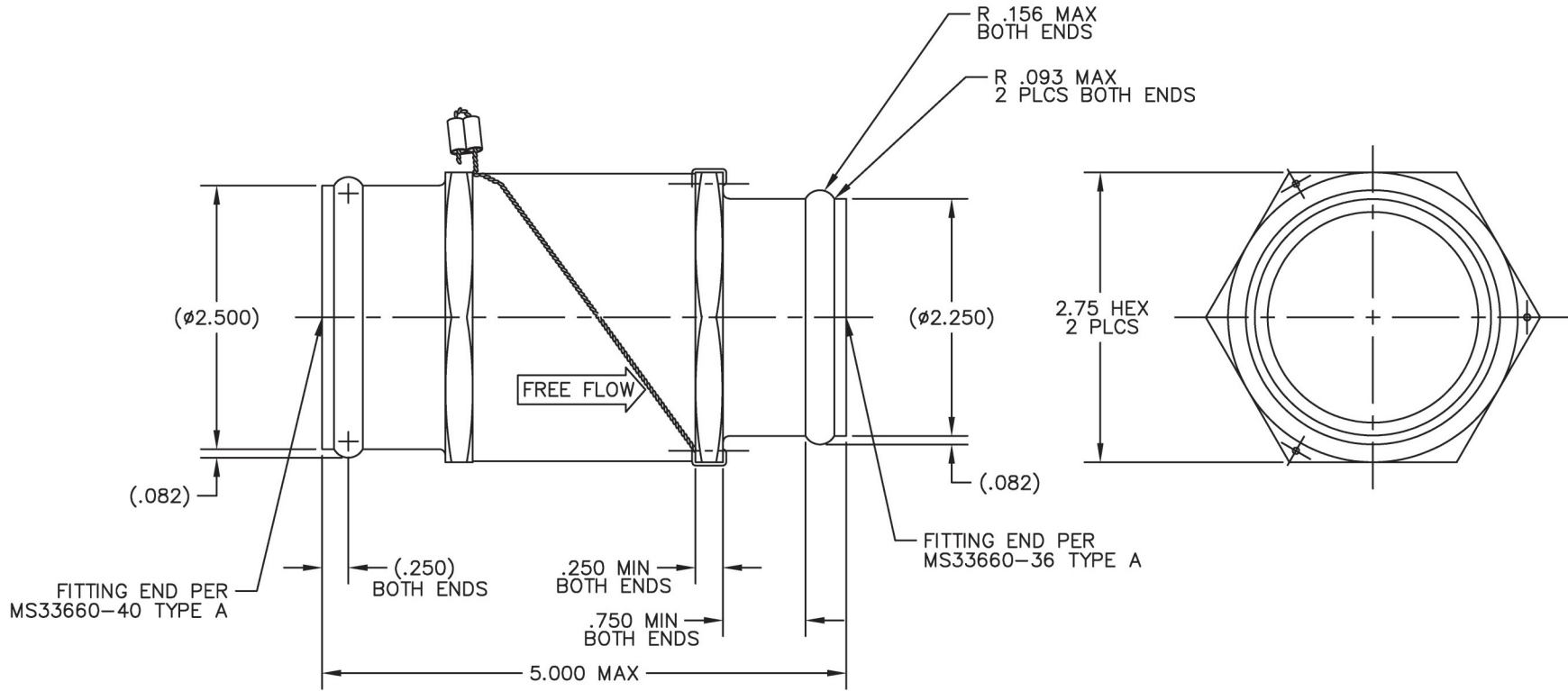
FLUIDS: JET A, JET A-1, JP-4, JP-5, JP-8, TS-1 AND AIR
MATERIAL: BODY 7075-T73511 AL
ELASTOMER MIL-R-83248
TEMPERATURE RANGE: -65°F TO 190°F
OPERATING PRESSURE: 50 PSIG
PROOF PRESSURE: 75 PSIG
CRACKING PRESSURE: 6 TO 8 PSID AT 0.01 LB/MIN FLOW
FLOW: (AIR) 6.0 LB/MIN AT 8 PSIG INLET
(FUEL) 140 GPM AT 11 PSID
INTERNAL LEAKAGE (CHECKED DIRECTION):
5 CC/MIN MAX FROM 0 TO 75 PSID
0.5" Hg MAX PRESSURE LOSS PER 5 MINUTES AT -12.2 PSID
WEIGHT: 2.22 LBS MAX



CATEGORY 1: SWING CHECK VALVES

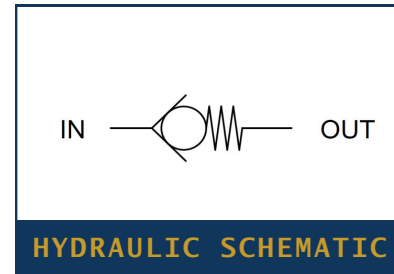


PART NUMBER: 2S6440, SWING CHECK VALVE



PERFORMANCE SPECIFICATIONS:

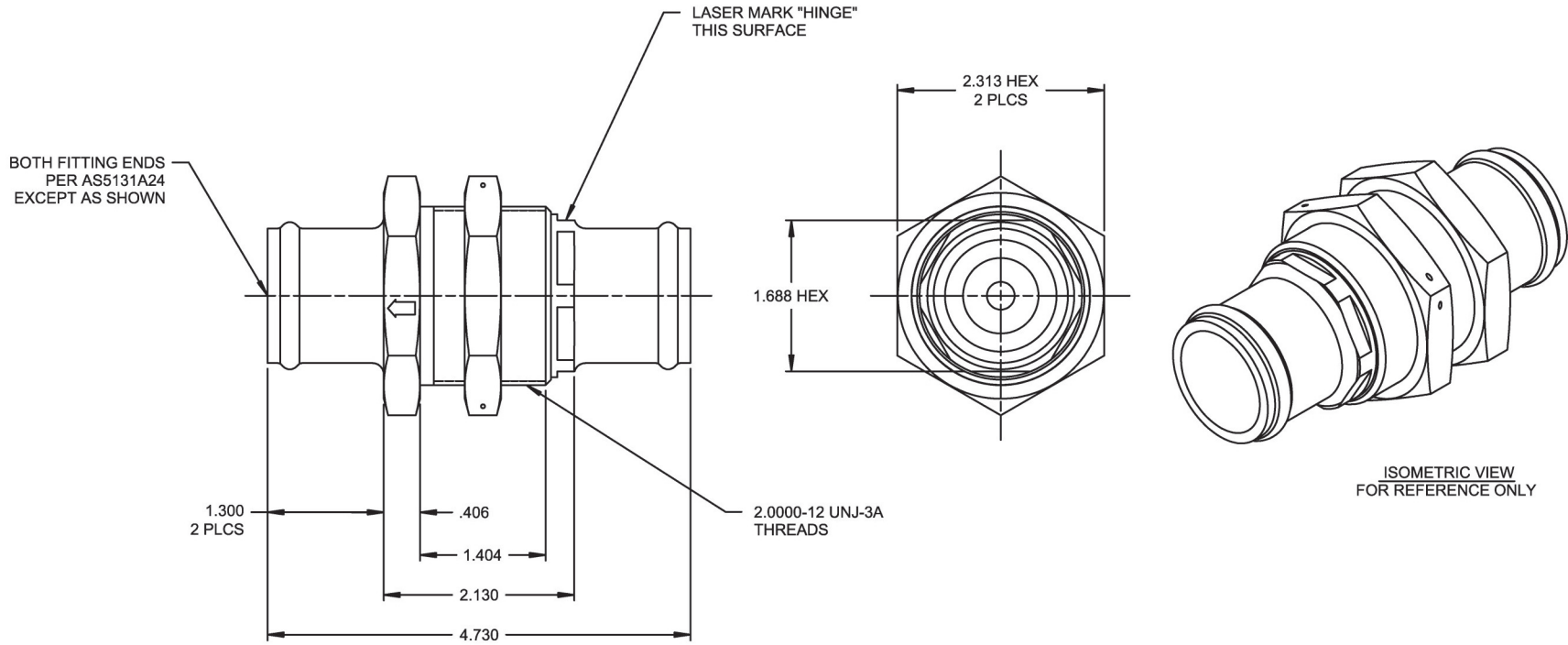
FLUIDS: AIR / WATER VAPOR
MATERIAL: BODY DELRIN
ELASTOMER ETHYLENE PROPYLENE
TEMPERATURE RANGE: -65°F TO 165°F
OPERATING PRESSURE: 0 TO 10 PSID VACUUM
PROOF PRESSURE: 15 PSID VACUUM
CRACKING PRESSURE: 8" H₂O MAX
FLOW: 300 SCFM AT 7 PSID MAX
INTERNAL LEAKAGE (CHECKED DIRECTION):
30 CC/MIN MAX FROM 0 TO 10 PSID



CATEGORY 1: SWING CHECK VALVES

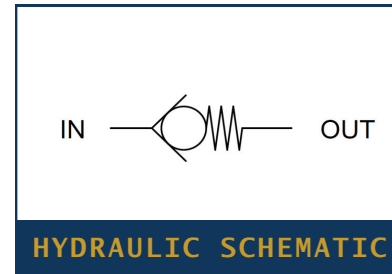


PART NUMBER: 2S7174, SWING CHECK VALVE



PERFORMANCE SPECIFICATIONS:

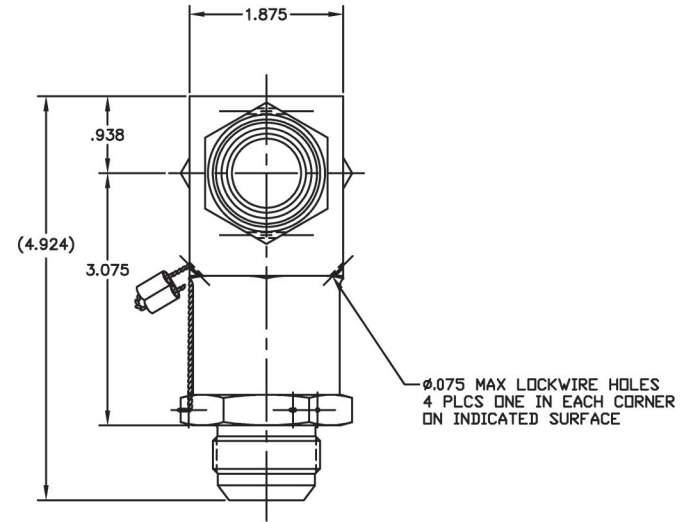
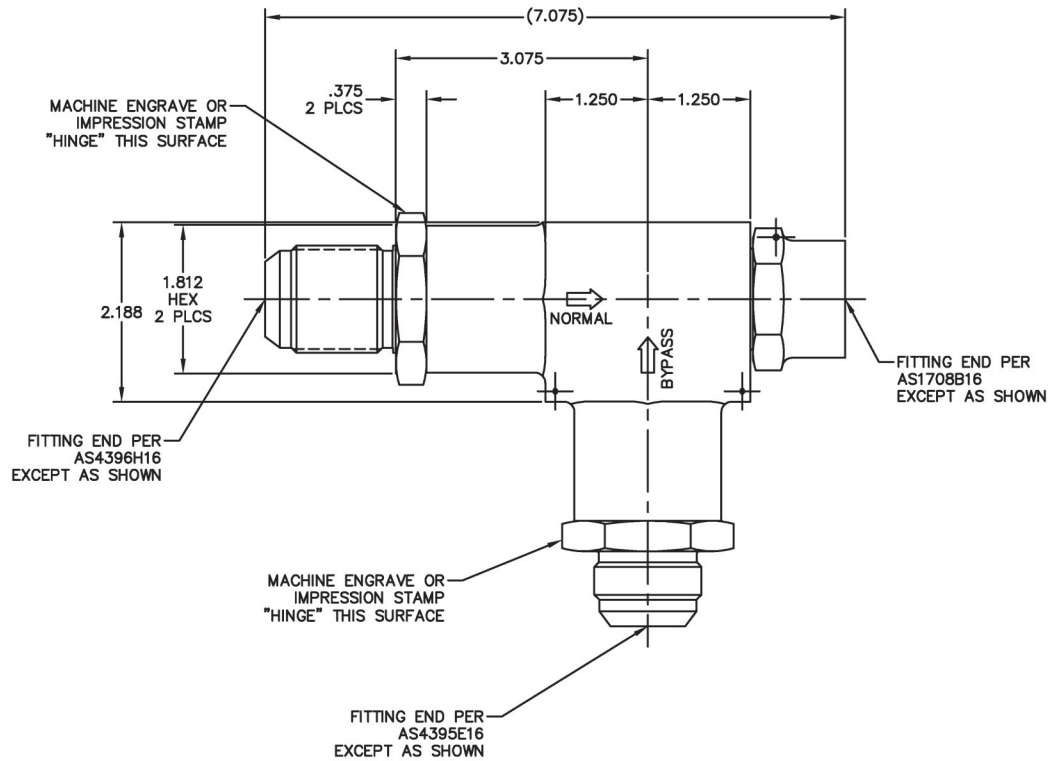
FLUIDS: BLEED AIR
MATERIAL: BODY 2024-T351 AL
ELASTOMER MIL-R-83248
TEMPERATURE RANGE: -40°F TO 350°F
OPERATING PRESSURE: 15 PSIG
PROOF PRESSURE: 30 PSIG
CRACKING PRESSURE: 8" H₂O MAX
FLOW: 6.0 LB/MIN AT 0.2 PSID
INTERNAL LEAKAGE (CHECKED DIRECTION):
0.2 LB/MIN AT 9 PSID
WEIGHT: .73 LBS MAX



CATEGORY 1: SWING CHECK VALVES

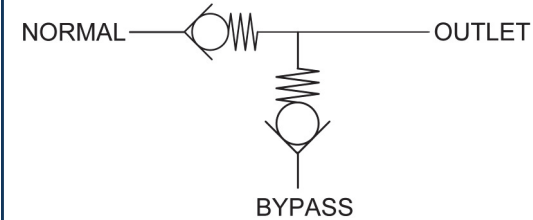


PART NUMBER: 2S6966, SWING CHECK VALVE, "TEE"



PERFORMANCE SPECIFICATIONS:

FLUIDS: ALL AIRCRAFT FUELS AND AIR
MATERIAL: BODY 2024-T351 AL
ELASTOMER FLUOROCARBON
TEMPERATURE RANGE: -65°F TO 270°F
OPERATING PRESSURE: 80 PSIG
PROOF PRESSURE: 400 PSIG
CRACKING PRESSURE: 0.3 PSID MAX
FLOW: 28 GPM AT 2.0 PSID MAX
INTERNAL LEAKAGE: 10 DPM MAX AT 1 PSID
1 DPM MAX FROM 10 TO 120 PSID
WEIGHT: 1.31 LBS MAX

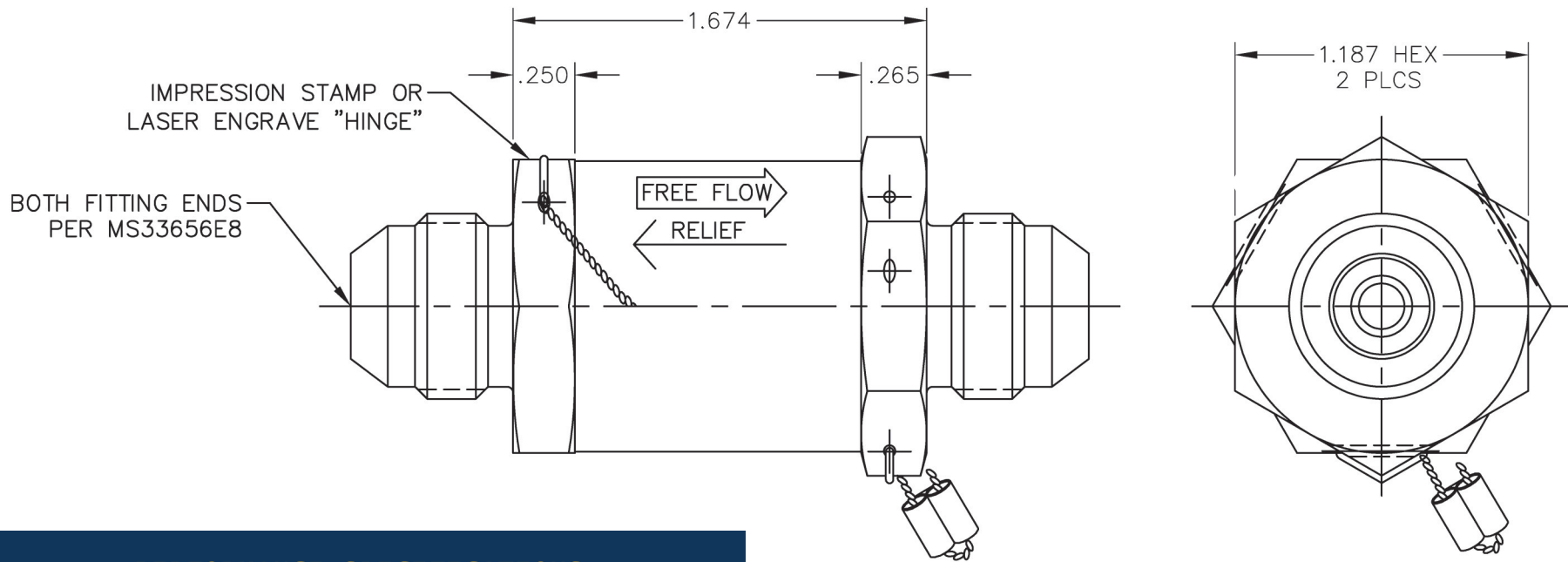


FLOW SCHEMATIC

CATEGORY 1: SWING CHECK VALVES



PART NUMBER: 2S6952, SWING CHECK VALVE WITH THERMAL RELIEF



PERFORMANCE SPECIFICATIONS:

FLUIDS: ALL AIRCRAFT FUELS AND AIR

MATERIAL: BODY 2024-T351 AL

ELASTOMER FLUOROCARBON

TEMPERATURE RANGE: -65°F TO 165°F (AMBIENT)
-65°F TO 135°F (FUEL)

OPERATING PRESSURE: 60 PSIG

PROOF PRESSURE: 120 PSIG

CRACKING PRESSURE: 8" H₂O MAX (CHECK VALVE)

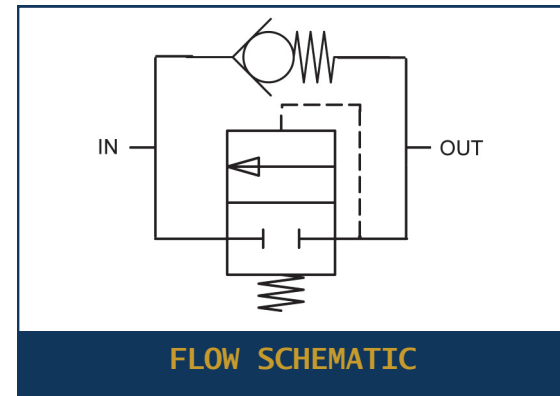
FLOW: 3.25 GPM AT 1.5 PSID MAX (FREE FLOW)
10 CC/MIN AT 65 PSID MAX (THERMAL RELIEF)

RELIEF: 47 TO 55 PSID

RESEAT: 35 PSID MIN

INTERNAL LEAKAGE (CHECKED DIRECTION):
.50 CC/MIN (FUEL) MAX ABOVE 4" H₂O (CHECK VALVE)
2 DPM MAX AT ZERO TO 45 PSIG IN CHECK DIRECTION
(THERMAL RELIEF)

WEIGHT: .16 LBS MAX

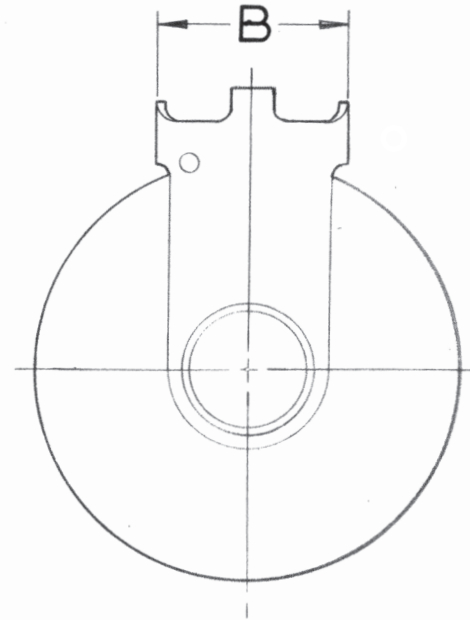
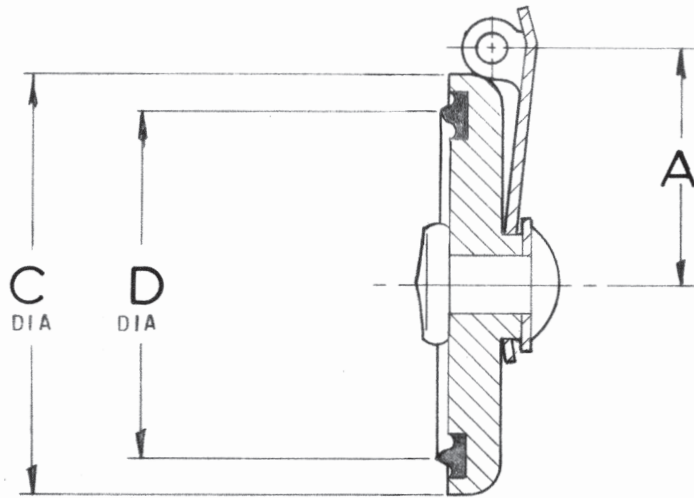


FLOW SCHEMATIC

CATEGORY 1: SWING CHECK VALVES



PART NUMBER: 2S4800L, SWING CHECK VALVE



PERFORMANCE SPECIFICATIONS:

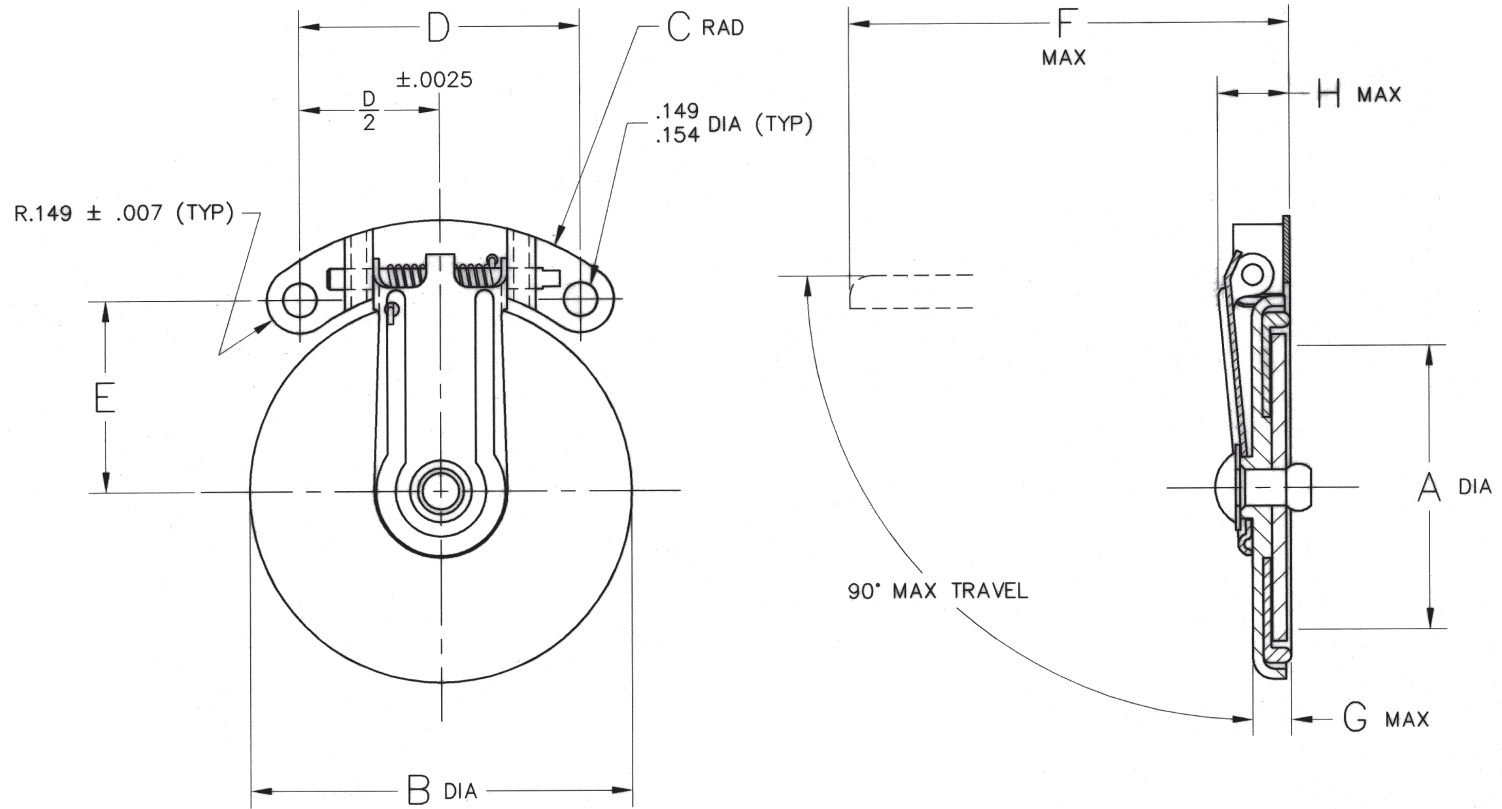
FLUIDS: AIRCRAFT FUELS AND AIR
 MATERIAL: DISC 2024-T351 AL
 ARM 302 CRES
 ELASTOMER MIL-R-25897
 TEMPERATURE RANGE: -65°F TO 160°F

PART NO	SIZE NO.	TUBE OD	$\pm.005$ A	$\begin{matrix} +.000 \\ -.005 \end{matrix}$ B	$\pm.005$ C	REF D
2S4804L	4	1/4	.332	.253	.562	.428
2S4804L	5	5/16	.332	.253	.562	.428
2S4804L	6	3/8	.332	.253	.562	.428
2S4808L	8	1/2	.375	.253	.660	.548
2S4808L	10	5/8	.375	.253	.660	.548
2S4812L	12	3/4	.500	.310	.880	.720
2S4816L	16	1	.625	.440	1.131	.960
2S4820L	20	1 1/4	.800	.557	1.406	-
2S4824L	24	1 1/2	.937	.591	1.688	-
2S4828L	28	1 3/4	1.093	.591	1.980	-
2S4832L	32	2	1.188	.623	2.200	-

CATEGORY 1: SWING CHECK VALVES



PART NUMBER: 2S5100, SWING CHECK VALVE, BRACKET-MOUNTED



PERFORMANCE SPECIFICATIONS:

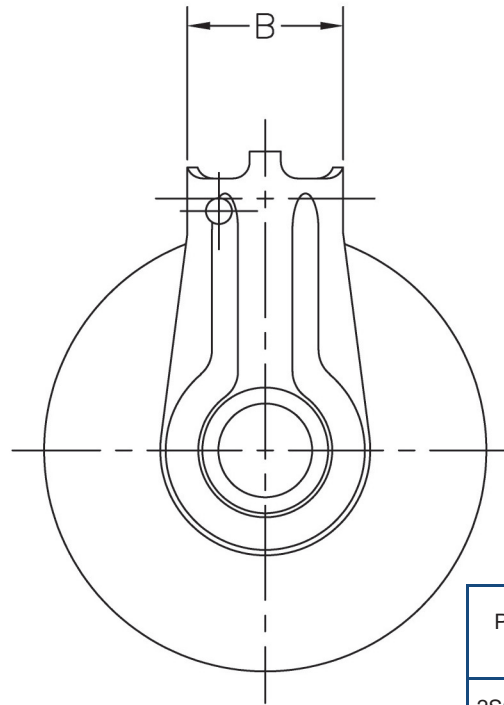
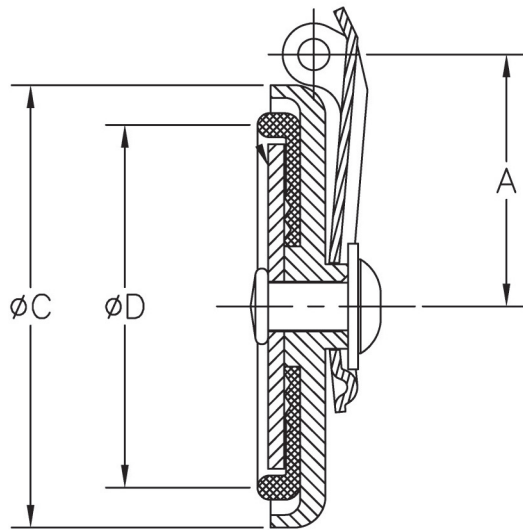
FLUIDS: AIRCRAFT FUELS AND AIR
 MATERIAL: ELASTOMER MIL-P-5315
 TEMPERATURE RANGE: -65°F TO 160°F
 CRACKING PRESSURE: 4" H₂O MAX
 FLOW: SEE TABLE AT 20 INCHES H₂O MAX ΔP
 INTERNAL LEAKAGE: .5 CC/MIN (FUEL) OR 10 CC/MIN (AIR) MAX
 ABOVE 4" H₂O THROUGH SIZE 32
 OTHER SIZES 1.0 CC/MIN & 20 CC/MIN RESPECTIVELY

PART NO	$\pm .005$ A	$\pm .005$ B	$\pm .010$ C	$\pm .005$ D	$\pm .005$ E	MAX F	MAX G	MAX H	FLOW (GPM)	PRESSURES (PSIG)		
										OPER	PROOF	BURST
2S5112	.561	.880	.757	.860	.440	1.076	.152	.282	15	300	500	1000
2S5116	.792	1.131	.903	1.110	.525	1.337	.165	.335	30			
2S5120	1.024	1.406	1.085	1.248	.710	1.687	.180	.373	50	265	400	800
2S5124	1.248	1.688	1.188	1.240	.845	1.965	.187	.362	70			
2S5128	1.483	1.980	1.338	1.240	1.025	2.269	.210	.395	100			
2S5132	1.781	2.200	1.438	1.382	1.100	2.480	.221	.470	130	60	120	180
2S5140	2.280	2.800	1.795	1.406	1.500	3.150	.280	.550	215			
2S5148	2.780	3.300	2.030	1.656	1.703	3.750	.300	.620	320			

CATEGORY 1: SWING CHECK VALVES



PART NUMBER: 2S6314, SWING CHECK VALVE



PART NO	SIZE NO.	TUBE OD	A	B	øC	øD
2S6314-4	4	1/4	.337 .327	.253 .248	.567 .557	.418
2S6314-4	5	5/16	.337 .327	.253 .248	.567 .557	.418
2S6314-4	6	3/8	.337 .327	.253 .248	.567 .557	.418
2S6314-8	8	1/2	.380 .370	.253 .248	.665 .655	.523
2S6314-8	10	5/8	.380 .370	.253 .248	.665 .655	.523
2S6314-12	12	3/4	.505 .495	.310 .305	.885 .875	.721
2S6314-16	16	1	.630 .620	.440 .435	1.136 1.126	.957
2S6314-20	20	1 1/4	.805 .795	.557 .552	1.411 1.401	1.206
2S6314-24	24	1 1/2	.942 .932	.591 .586	1.693 1.683	1.455
2S6314-28	28	1 3/4	1.098 1.088	.591 .586	1.985 1.975	1.706
2S6314-32	32	2	1.193 1.183	.623 .618	2.205 2.195	1.929

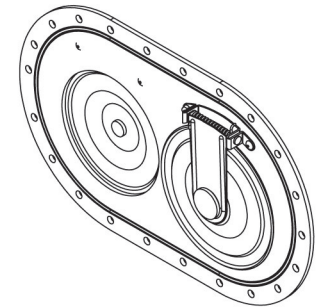
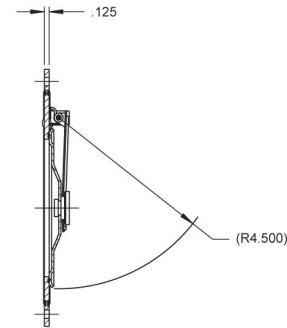
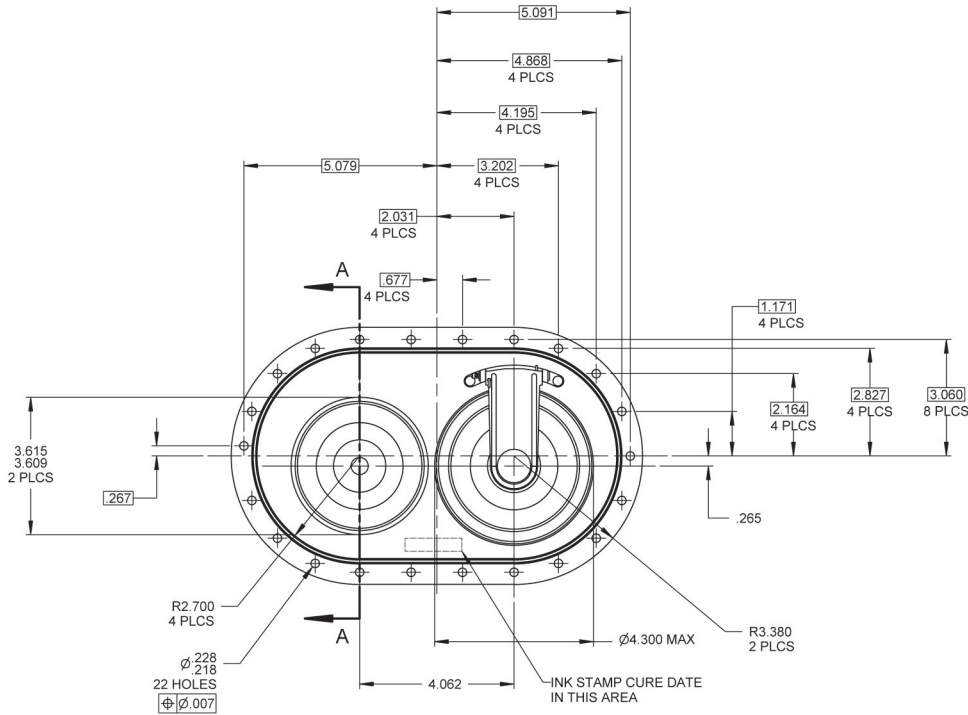
PERFORMANCE SPECIFICATIONS:

FLUIDS: AIRCRAFT FUELS AND AIR
 MATERIAL: RETAINER 380 AL
 WASHER 2024-T3 AL
 ARM 302 CRES
 ELASTOMER MIL-R-83248
 TEMPERATURE RANGE: -65°F TO 350°F

CATEGORY 1: SWING CHECK VALVES



PART NUMBER: 2S2072, SWING CHECK VALVE, FLANGE MOUNTED



PERFORMANCE SPECIFICATIONS:

FLUIDS: AIRCRAFT FUELS PER MIL-G-5572 AND MIL-J-5624

MATERIAL: BODY 2024-T3 AL

ARM 302 CRES

ELASTOMER MIL-R-6855

TEMPERATURE RANGE: -65°F TO 160°F

PROOF PRESSURE: 10 PSIG

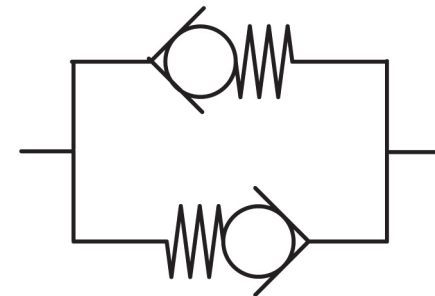
CRACKING PRESSURE: 1.5" TO 4" H₂O WITH AIR FLOW OF 30 CFH

FLOW: 23.0 LBS/MIN AT 0.3 PSID MAX

INTERNAL LEAKAGE (CHECKED DIRECTION):

15 CFH MAX FROM NONE TO 1.5" H₂O

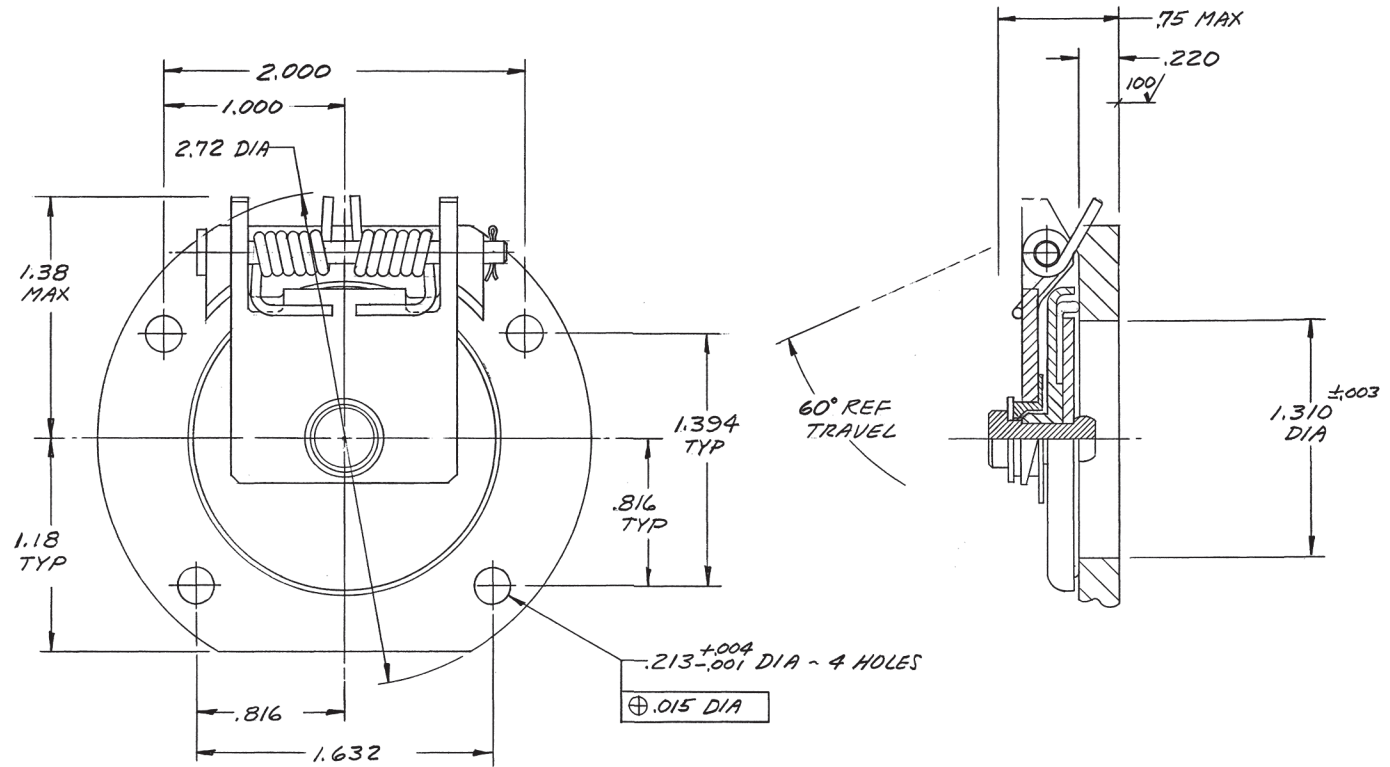
WEIGHT: .95 LBS MAX



CATEGORY 1: SWING CHECK VALVES



PART NUMBER: 2S2570, SWING CHECK VALVE



PERFORMANCE SPECIFICATIONS:

FLUIDS: AIR

MATERIAL: BODY 6061-T6 AL

ELASTOMER MIL-P-5315

TEMPERATURE RANGE: -65°F TO 160°F

OPERATING PRESSURE: 10 PSIG

PROOF PRESSURE: 20 PSIG

CRACKING PRESSURE: 1.5 PSID

FLOW: 26 SCFM AT 0.5 PSID ABOVE CRACK

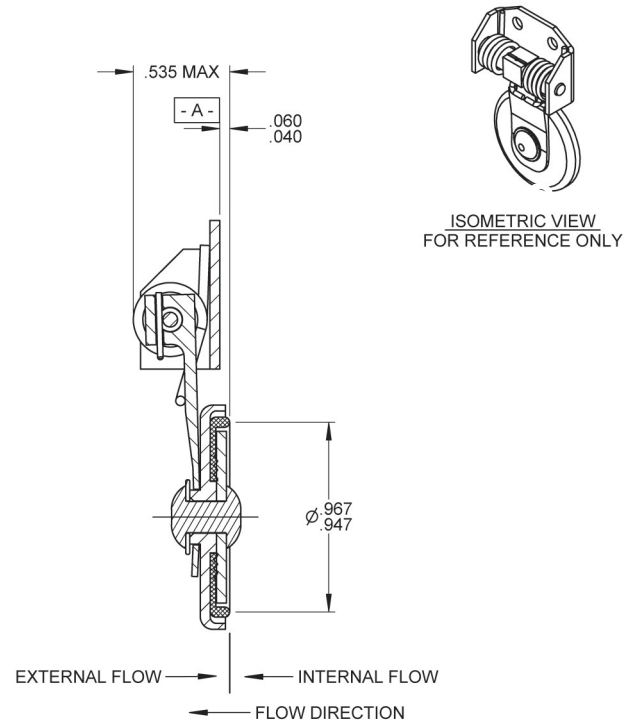
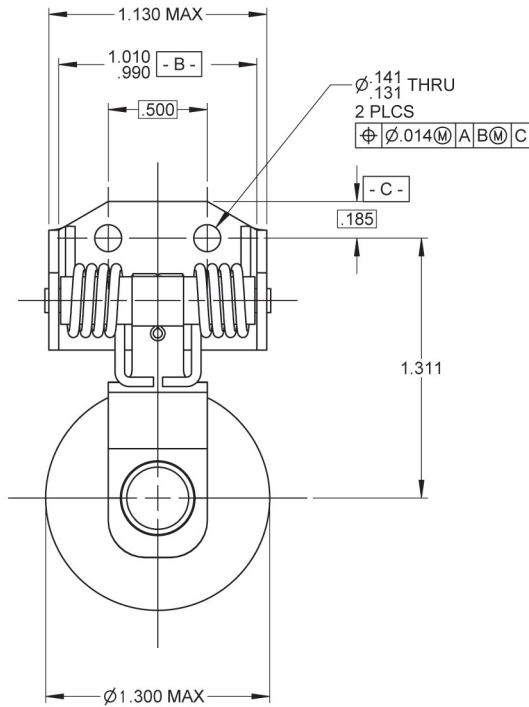
INTERNAL LEAKAGE (CHECKED DIRECTION):

.05 SCFM AT 10 PSID OR BELOW

CATEGORY 1: SWING CHECK VALVES



PART NUMBER: 2S7140, SWING CHECK VALVE



PERFORMANCE SPECIFICATIONS:

FLUIDS: AIR, JP-10 PER 3123AS1088, SEAWATER

MATERIAL: BRACKET 6061-T6 AL

RETAINER 2024-T851 AL

ARM 304 CRES

ELASTOMER FLUOROSILICONE

TEMPERATURE RANGE: -50°F TO 160°F

OPERATING PRESSURE: 60 PSIG

PROOF PRESSURE: 60 PSIG

CRACKING PRESSURE: 2 TO 3.5 PSID

FLOW: 130 SCFM USING AIR AT 7 PSID

INTERNAL LEAKAGE (CHECKED DIRECTION):

10 CC/MIN MAX PRIOR TO CRACK

WEIGHT: .05 LBS MAX

CATEGORY 1: SWING CHECK VALVES



CRISSAIR HAS HUNDREDS OF OTHER CHECK VALVES NOT LISTED IN THE CATALOG WITH DIFFERENT MATERIALS, FITTINGS, AND SIZE CONFIGURATIONS.

CONTACT CRISSAIR FOR ADDITIONAL INFORMATION/DRAWINGS AT

(661) 367-3300 OR SALES@CRISSAIR.COM.

YOU CAN ALSO VISIT WWW.CRISSAIR.COM.